

UNIVERSAL DRY VERGE SYSTEM

VERGE

WIZARD



Scan me
for more
information

The new quick and
easy universal dry
verge system



KEY FEATURES:

Fast flex and clip
installation method



Solid and
robust



Easy locate
starter unit



Mechanically
fixed



All weather
installation



Accommodates
gutter systems



Save time and money with the Verge Wizard dry fix verge system - designed to provide a quick and easy, great looking solution for finishing the verge of a roof.

The system is available in grey and brown and manufactured from UV stable high quality polypropylene.

Installation is quick and easy via the 'flex and clip' installation method and no special tools are required making it ideal for rapid refurbishment work.

Verge Wizard offers a sleek, stylish finish that is highly robust and practically maintenance free. Manufactured in the UK to high quality standards in a modern, efficient factory.

ROOFLINE MAGIC:

- Universal - can be used on left and right hand verges
- Fit and forget reliability
- Unique modern design
- Fast flex and clip installation
- Quick, easy fit starter unit
- Meets current building regulations
- Mechanically fixed
- Batten gauge range: 260 - 355mm
- Roof pitch range: 15 - 55°
- Manufactured in the UK

KEY FEATURES:



Fast flex and clip installation method



Solid and robust



Easy locate starter unit



Mechanically fixed



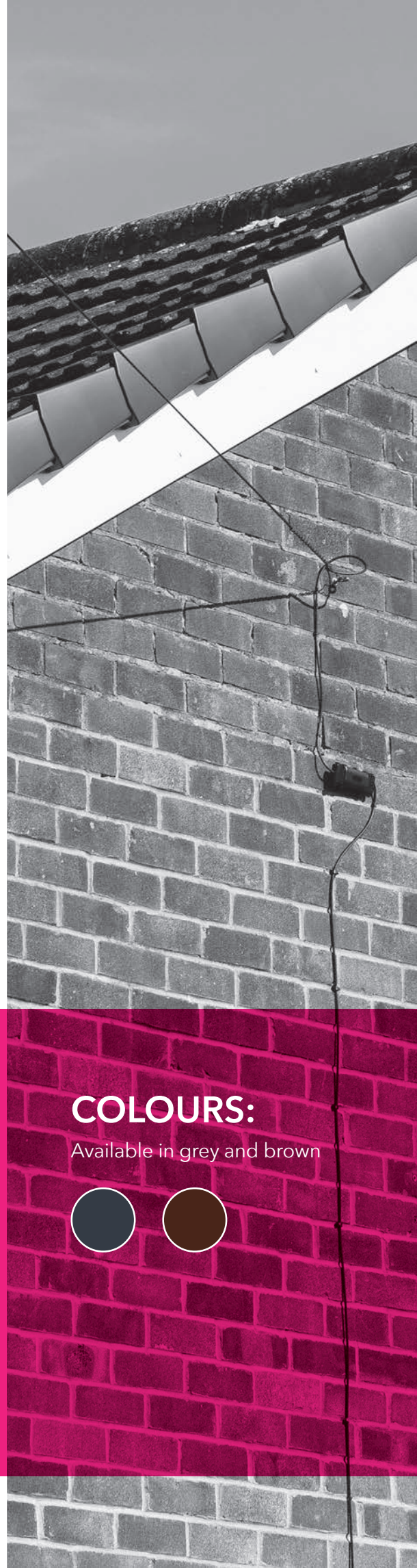
All weather installation



Accommodates gutter systems

COLOURS:

Available in grey and brown





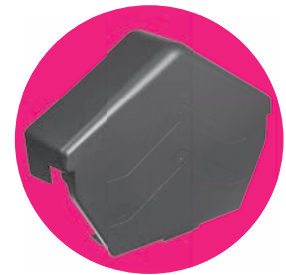
PRODUCT RANGE:



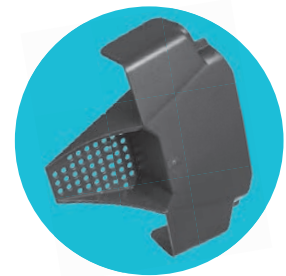
Verge unit



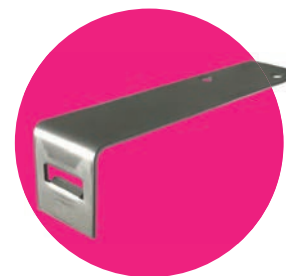
Round ridge cap



Angled ridge cap



Starter unit

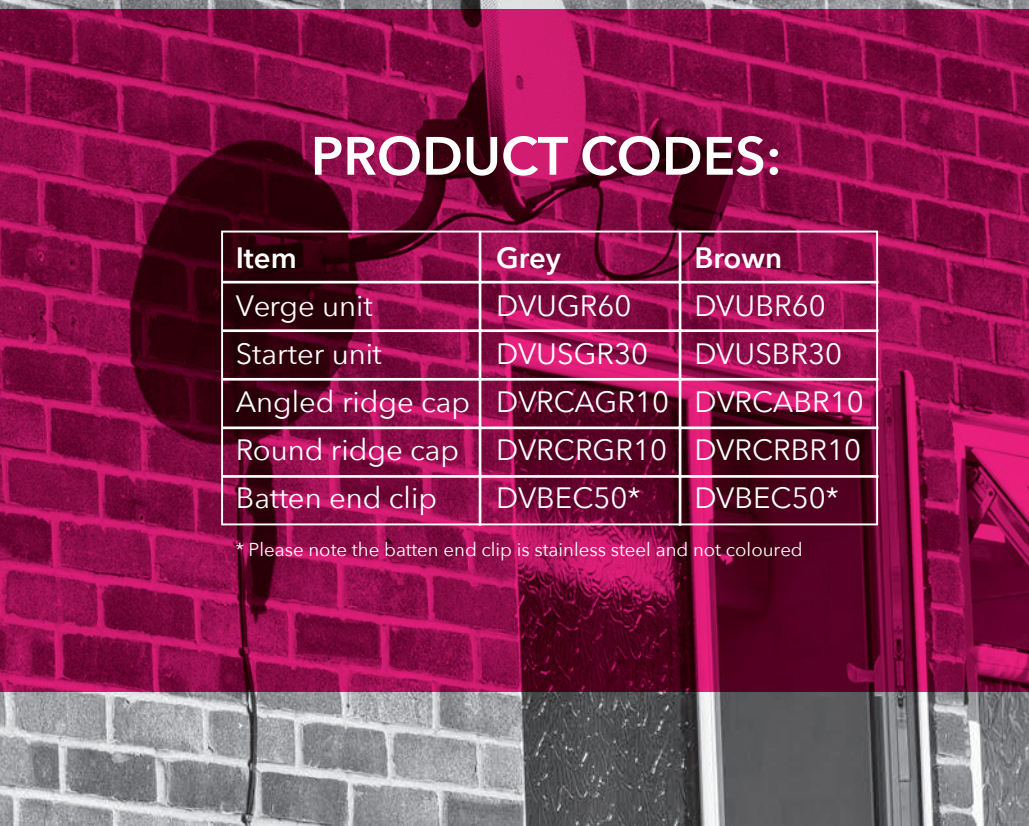


Batten end clip

PRODUCT CODES:

Item	Grey	Brown
Verge unit	DVUGR60	DVUBR60
Starter unit	DVUSGR30	DVUSBR30
Angled ridge cap	DVRCAGR10	DVRCABR10
Round ridge cap	DVRCRGR10	DVRCRBR10
Batten end clip	DVBEC50*	DVBEC50*

* Please note the batten end clip is stainless steel and not coloured

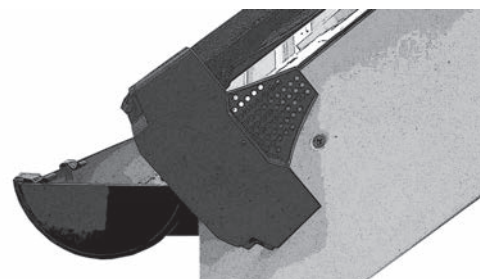


4 simple steps for a quick and easy installation:

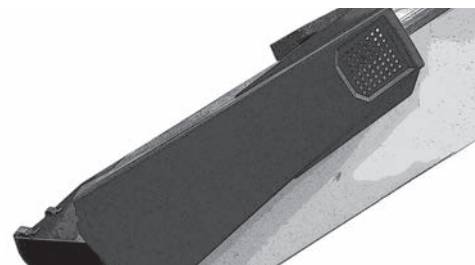
For newbuild - ensure tiling battens are extended 35mm beyond the gable wall or bargeboard. Fix a batten end clip to the end of every batten using a 40mm (min) x 3.25mm ring shank nail or equivalent screw.

For refurbishment - it is recommended that all existing mortar is removed. Run a suitable batten from eaves to ridge, below the undercloak on the gable wall or directly to the bargeboard.

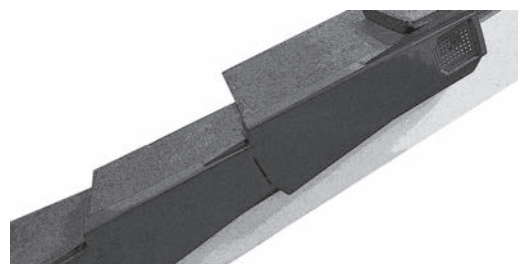
1. Fix the starter plate to the gable wall or bargeboard, ensuring the location guide is on top of the tile.
2. Fix the first Verge Wizard in place by clipping over the starter plate and ensuring the top of the verge unit is under the tile above. Fix into position through the batten end clip or running batten depending on your project.
3. For each successive Verge Wizard simply flex and clip over the verge below and slide up to the tile toe. Fix into position through the batten end clip or running batten depending on your project. Continue this process until you reach the ridge.
4. Flex and clip the ridge cap over the ends of both units, central to the ridge tile, and securely screw to the ridge batten.



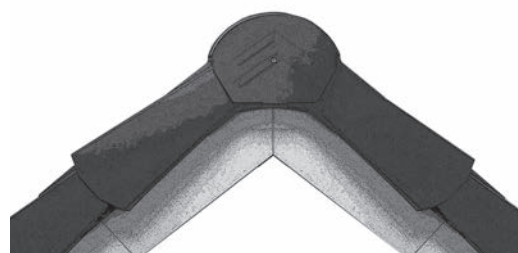
Step 1



Step 2



Step 3



Step 4

Contact Details

Dry Verge Systems

Pioneer House, Mariner
Lichfield Road Industrial Estate
Tamworth, Staffordshire, B79 7TF

hello@dryvergesystems.co.uk
www.dryvergesystems.co.uk

UNIVERSAL DRY VERGE SYSTEM
VERGE
WIZARD

